

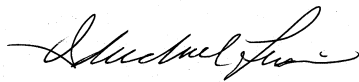
August 2022

Dear Applicant:

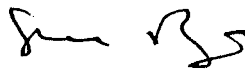
On behalf of the Mount Sinai Graduate Medical Education Committee, the Center for Multicultural and Community Affairs (CMCA) and the GME Diversity Council, we would like to welcome you to our institution. We are very pleased that you have chosen to apply to one of our residency programs for post-graduate training. Mount Sinai has a lot to offer in the areas of medical education, research, and professional development. We hope that your visit with us helps to strengthen your consideration of Mount Sinai as an option for your continued professional development.

Mount Sinai has a longstanding commitment to ethnic, racial and gender diversity. To this end, we continue to seek qualified applicants from diverse backgrounds to join our residency programs and faculty. While the CMCA would like to meet with every applicant to further discuss this commitment, we understand your time constraints. For this reason, we are enclosing this letter and an informational brochure about CMCA. The CMCA is charged with supporting the diversity of students, trainees and faculty at Mount Sinai and facilitating research related to healthcare disparities. The CMCA was established more than 20 years ago and is working with Mount Sinai residency programs to provide support in the recruitment of house staff and faculty from groups underrepresented in medicine. The GME Diversity Council is instrumental in supporting these diversity efforts. If you are interested in learning more about CMCA or meeting with a resident physician or faculty to discuss our diversity efforts, please let us know. Additionally, you may receive a call from our office after your interview to discuss your experience at Mount Sinai.

You may learn more about our Center by visiting our website, www.mssm.edu/cmca, or by contacting us at cmca@mssm.edu or 212-241-8276. Once again, we would like to thank you for considering Mount Sinai and wish you the very best in all your future endeavors.



I. Michael Leitman, M.D., F.A.C.S.
Co-Chair, GME Diversity Council
Dean for Graduate Medical Education



Gary C. Butts, M.D.
Co-Chair, GME Diversity Council
Chief Diversity and Inclusion Officer, MSHS
Executive Vice President for Diversity, Equity, and Inclusion
Dean for Diversity Programs, Policy and Community Affairs



CMCA

Center for
Multicultural and
Community Affairs

Valuing Diversity. Transforming Medicine.

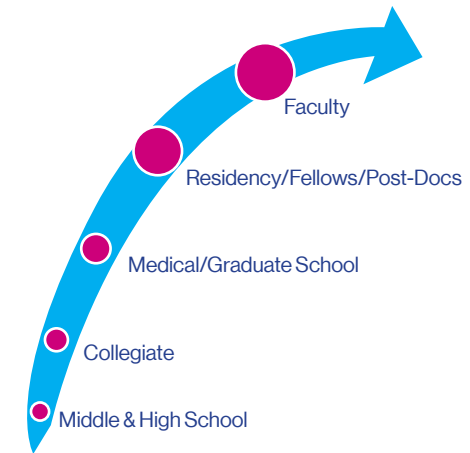


Icahn
School of
Medicine at
**Mount
Sinai**



A Key Strategy: Growing Our Own

Our mission of the Center for Multicultural and Community Affairs (CMCA) is to eliminate health disparities through a nationally recognized center structure using innovative, integrative, and coordinated approaches in the areas of patient care, education, and research in community settings; to improve the health of all populations by diversifying the health care workforce; and to influence health policy and research.



A key strategy of CMCA to increase the level of diversity in our clinical and research workforce is to facilitate the institutional investment in “growing our own” future leaders in medicine and science.



Advance workforce diversity



Develop social justice minded physicians and scientists



Develop leaders through service

Growing Our Own Pipeline Programs

Faculty and Post-Graduate Level:

Career development of minority faculty and post-graduate trainees is achieved through our longstanding Faculty Scholars Program—a highly individualized career development program.

Medical and Graduate Student Level:

CMCA focuses on the recruitment and retention of students underrepresented in medicine and science in collaboration with various departments and committees across the institution to develop programming to enhance the recruitment, professional development, and retention of a diverse student body.

Middle School/High School/Collegiate Levels:

The Center for Excellence in Youth Education (CEYE), housed in CMCA, develops and implements career exploration and biomedical sciences enrichment and educational pipeline programs with secondary schools and colleges in New York City and with medical student-led programs directed towards exposing youth to science and medicine.

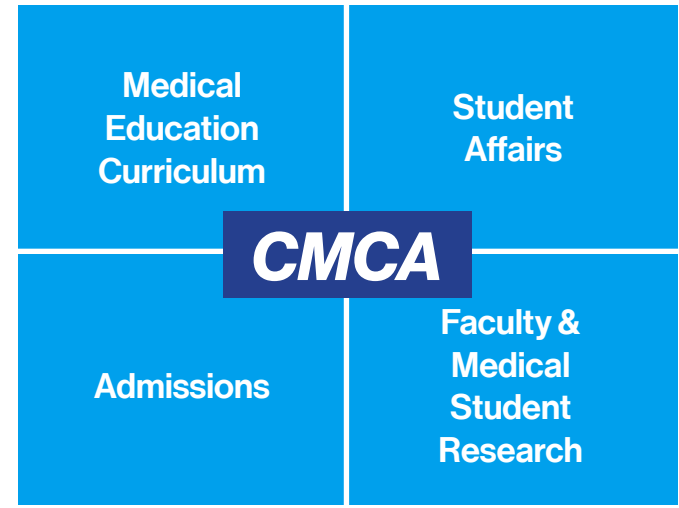


As an integrative entity, CMCA works to foster a diverse and inclusive environment. We aim to achieve this goal through our active involvement in four major areas within the School of Medicine: Curriculum, Student Affairs, Admissions, and Research. Specifically, we support educational pipeline programs, minority affairs, institution-wide diversity initiatives, academic and non-academic supports for medical and graduate students and

other trainees, community engagement and service learning activities, and culture and medicine programs within the School of Medicine. In addition to CMCA's role as the diversity center of ISMMS, CMCA is a part of the Office for Diversity and Inclusion of the Mount Sinai Health System. For more information, visit mountsinaihealth.org/diversity.

1998

Valuing Diversity,
Transforming Medicine



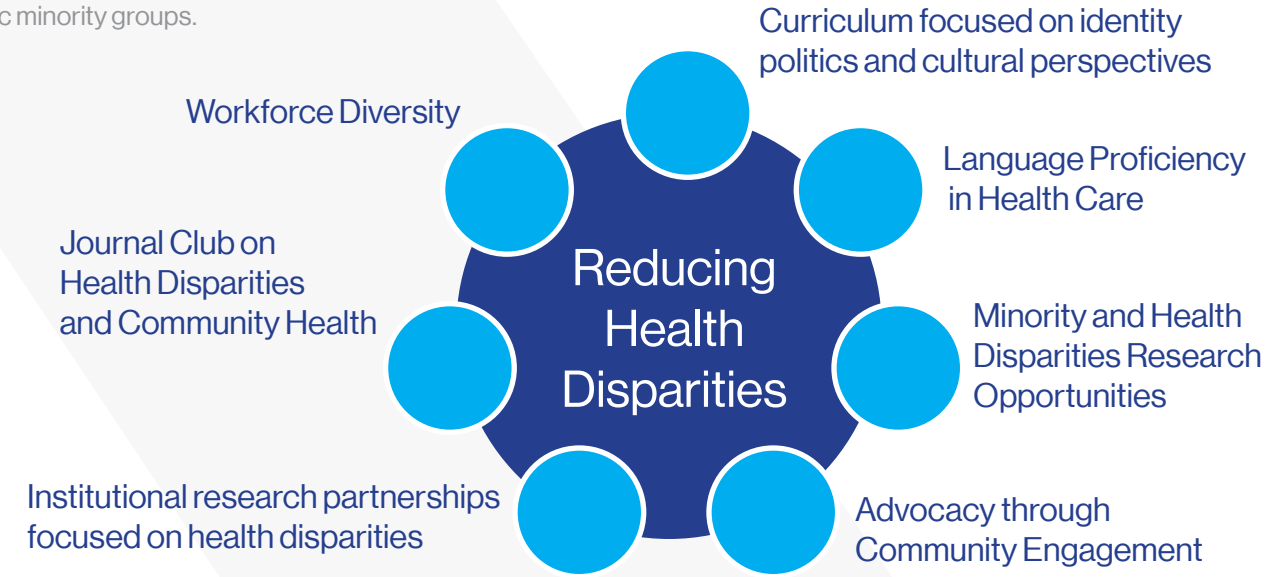
How You Can Support CMCA

Since its inception in 1998, the CMCA has become an integral part of the Icahn School of Medicine at Mount Sinai, helping to strengthen ties with its communities and making the diversity of the medical student body rank among the best in the nation while expanding the pipeline to improve the diversity of its faculty and trainees. Now more than ever, we need your assistance to help change the face of medicine—in inner cities across America and especially within our own community. To ensure the longevity of CMCA's mentoring and career development programs, please consider making a donation through the donation link on our website: icahn.mssm.edu/cmca.



Despite a marked improvement in the overall health status of citizens of the United States, not all Americans have benefited equally from improvements in care. Racial and ethnic health disparities in death, disease, and disability still persist. While efforts to design and implement innovative solutions are underway to close the gap, strengthening the relationship between research, education, training, practice, and policy as an integrated approach is critical to figuring out what works to improve the health and well-being of racial and ethnic minority groups.

CMCA works to reduce health disparities by engaging in a wide range of departmental, institutional, and community-oriented activities which aim to enhance our faculty, staff, and students' capabilities through research, training, and education to engage with and care for culturally diverse populations.



About the Icahn School of Medicine at Mount Sinai

Commitment to excellence in research, education, and patient care form the foundation that makes the Icahn School of Medicine at Mount Sinai one of the world's foremost centers for medical and scientific training. Mount Sinai's educational philosophy reflects the ever-changing face of contemporary science. The most important thing medical and science students can learn is how to continue learning. Exceptional patient care is a hallmark of The Mount Sinai Hospital and one of the keystones of medical education at the School. A seamless connection between the School and the Hospital sets Mount Sinai apart from most centers of scientific inquiry, by facilitating the rapid transfer of research developments to patient care and clinical insights back to the laboratory for further investigation.

At the Icahn School of Medicine at Mount Sinai, we are committed to promoting and supporting diversity at all levels in the working and learning environments and to meeting the needs of the diverse body of students, faculty, staff, and communities we serve. Programs and initiatives provided through our Center for Multicultural and Community Affairs, in large part, support these successes.

For more information contact:

Gary C. Butts, MD

Chief Diversity and Inclusion Officer
Director, Office for Diversity and Inclusion
Mount Sinai Health System
Dean, Diversity Programs and Policy
Director, Center for Multicultural
and Community Affairs
Icahn School of Medicine at Mount Sinai

Mailing Address:

Center for Multicultural and Community Affairs
Icahn School of Medicine at Mount Sinai
One Gustave L. Levy Place, Box 1035
New York, NY 10029
phone: 212-241-8276
fax: 212-241-3594
email: cmca@mssm.edu

icahn.mssm.edu/cmca